

SCALE 1/2

**Specification :**

**Material :**

1. Top Case: 1.5mm thickness, SPCC, BK(RAL9005).
2. Bottom Case: 1.5mm thickness, SPCC, BK(RAL9005).
3. Plunger: 2 pcs, Snap Rivet, Male Nylon/Female PC material, Black color.
4. LC Adaptor: 6 pcs, Multimode, LC Duplex (SC Footprint) Type, W/Phosphor Bronze Sleeve, UL 94-V0, Aqua color.
5. MPO Adaptor: A Type Key Up to Key Down, 1 piece, PBT, UL V-0, Black color.
6. Screw: 14 pcs, M2.0x6.0 Zinc Plated, Wafer Head, Black color.
7. MPO Dust Cover: 1 piece, TPR, Black color.
8. Screw: 2 pcs, M3.0x4.0/4.5mm Zinc Plated, Wafer Head, Black color.
9. Harness Patch Cord: 1 pcs, Low loss MPO(Male) to LC OM3 12C Patch cord 30cm Female

**Performance :**

- a. Dimension: 1.18" x 3.59" x 5.12"  
(30.0 x 91.1 x 130.0mm)
- b. Weight: 0.40kg.
- c. Surface Finished: Painted, BK(RAL9005)

DRAWING DIM. Matching DIM.		DRAWING	28.DEC.2012	YAN
		CHECK	28.DEC.2012	MAER
Others General DIM.		APPROVAL	28.DEC.2012	FRANK
		SCALE	1/2 (A4)	UNIT mm
GENERAL TOLERANCE OF DIMENSIONS		DATE	NAME	
X.XXX ±0.005		ITEM NO.: 21.17.0348		
X.XX ±0.05		ROLINE MPO - Module, MPO M / 12X LC F		
X.X ±0.1		DRAWING NO. 12P LC LGX cassette (S01)		
		DRAWING CLASSIFICATION		SHEET 1 OF 2
		DRAWING CLASSIFICATION		SHEET 1 OF 2

**rotronic**

10cm

6

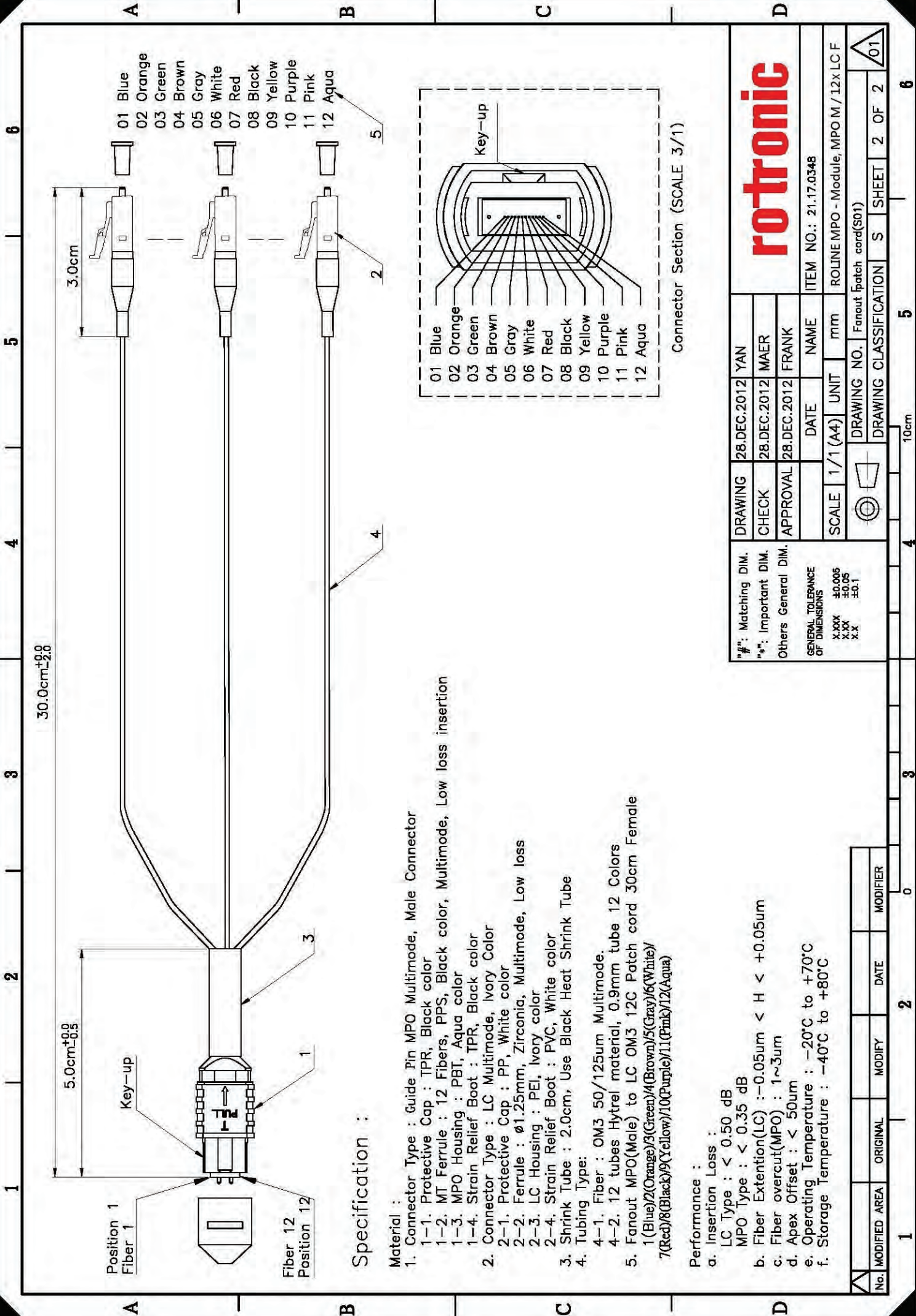
5

4

3

2

1



Position 1  
Fiber 1

Fiber 12  
Position 12

**Specification :**

- Material :**
- Connector Type : Guide Pin MPO Multimode, Male Connector
    - 1-1. Protective Cap : TPR, Black color
    - 1-2. MT Ferrule : 12 Fibers, PPS, Black color, Multimode, Low loss insertion
    - 1-3. MPO Housing : PBT, Aqua color
    - 1-4. Strain Relief Boot : TPR, Black color
  - Connector Type : LC Multimode, Ivory Color
    - 2-1. Protective Cap : PP, White color
    - 2-2. Ferrule :  $\phi 1.25\text{mm}$ , Zirconia, Multimode, Low loss
    - 2-3. LC Housing : PEI, Ivory color
    - 2-4. Strain Relief Boot : PVC, White color
  - Shrink Tube : 2.0cm, Use Black Heat Shrink Tube
  - Tubing Type:
    - 4-1. Fiber : OM3 50/125um Multimode.
    - 4-2. 12 tubes Hytrel material, 0.9mm tube 12 Colors
  - Fanout MPO(Male) to LC OM3 12C Patch cord 30cm Female
    - 1(Blue)/2(Orange)/3(Green)/4(Brown)/5(Gray)/6(White)/7(Red)/8(Black)/9(Yellow)/10(Purple)/11(Pink)/12(Aqua)

**Performance :**

- Insertion Loss :
  - LC Type :  $< 0.50$  dB
  - MPO Type :  $< 0.35$  dB
- Fiber Extension(LC) :  $-0.05\text{um} < H < +0.05\text{um}$
- Fiber overcut(MPO) :  $1 \sim 3\text{um}$
- Apex Offset :  $< 50\text{um}$
- Operating Temperature :  $-20^\circ\text{C}$  to  $+70^\circ\text{C}$
- Storage Temperature :  $-40^\circ\text{C}$  to  $+80^\circ\text{C}$

**rotronic**

ITEM NO.: 21.17.0348

ROLINE MPO - Module, MPO M / 12x LC F

DRAWING	28.DEC.2012	YAN
CHECK	28.DEC.2012	MAER
APPROVAL	28.DEC.2012	FRANK
SCALE	1/1 (A4)	UNIT mm

DRAWING NO. Fanout patch cord(S01)

DRAWING CLASSIFICATION S SHEET 2 OF 2

GENERAL TOLERANCE OF DIMENSIONS

X.XXX  $\pm 0.005$   
X.XX  $\pm 0.05$   
X.X  $\pm 0.1$

DATE

NAME

UNIT

mm

DRAWING NO.

Fanout patch cord(S01)

DRAWING CLASSIFICATION

S SHEET 2 OF 2

No. MODIFIED AREA ORIGINAL MODIFY DATE MODIFIER

1 2 0

10cm

4 4 3 3 5 6

10cm

4 4 3 3 5 6

10cm

4 4 3 3 5 6

10cm